



# INDOFINE Chemical Company, Inc.

121 Stryker Lane, Bldg. 30, Suite 1 • Hillsborough, NJ 08844 • U.S.A.

Phone: (908) 359-6778 • FAX: (908) 359-1179

website: [www.indofinechemical.com](http://www.indofinechemical.com)

e-mail: [chemical@indofinechemical.com](mailto:chemical@indofinechemical.com)

## CERTIFICATE OF ANALYSIS

Catalog Number: 020619

Product Name: **GELSEMINE**

CAS Number: [509-15-9]

Lot Number: 2003407

Chemical Formula:  $C_{20}H_{22}N_2O_2$

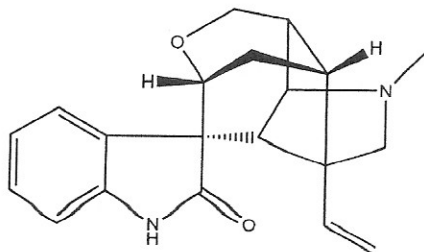
Molecular Weight: 322.41

Appearance: Off-white powder

Loss on Drying: 1.5%

Storage: Store in a cool, dry place. Protect from light.

Purity(HPLC): 98.86%



Prepared by:  
Ramesh Mandadi  
Ramesh Mandadi  
Director of Operations

Reviewed and Approved by  
Sujata Moton  
Sujata Moton  
VP



# INDOFINE Chemical Company, Inc.

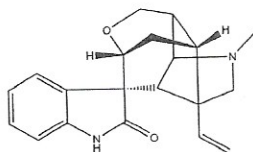
121 Stryker Lane, Bldg. 30, Suite 1 • Hillsborough, NJ 08844 • U.S.A.

Phone: (908) 359-6778 • FAX: (908) 359-1179

website: [www.indofinechemical.com](http://www.indofinechemical.com)

e-mail: [chemical@indofinechemical.com](mailto:chemical@indofinechemical.com)

## HPLC ANALYSIS

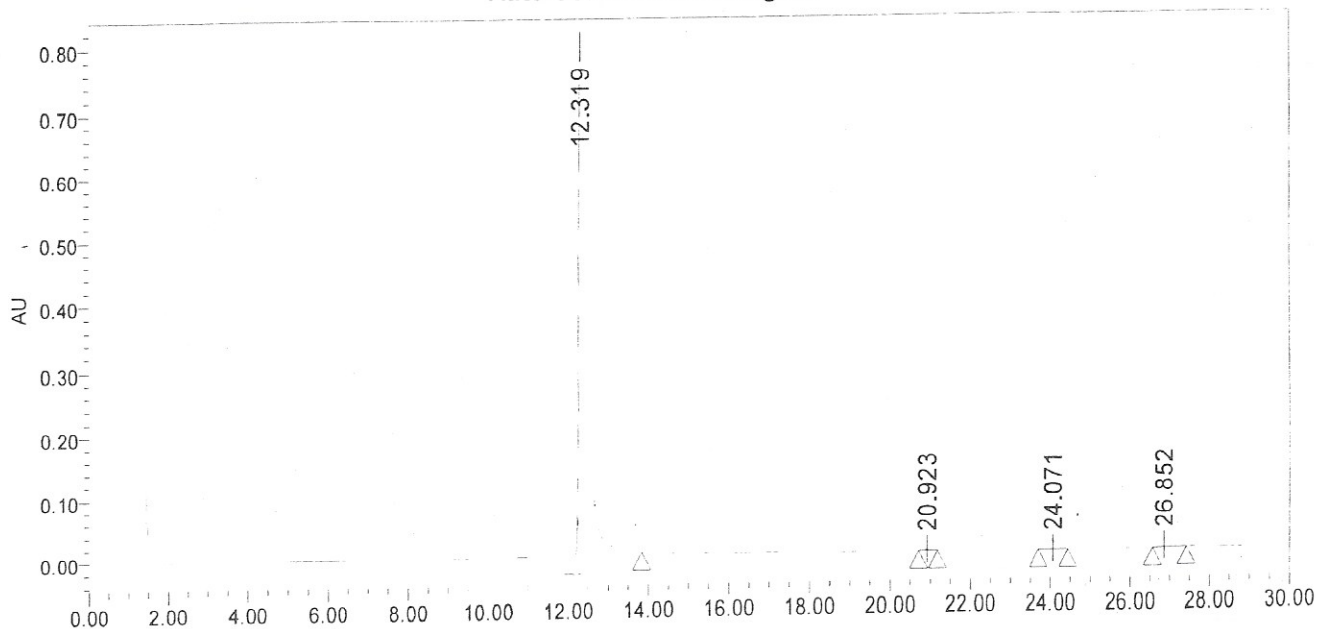


Catalog No.: 020619  
Product Name: Gelsemine  
Lot No.: 2003407

### SAMPLE INFORMATION

Sample Name:	Gelsemine	Acquired By:	prf01
Sample Type:		Sample Set Name:	
Vial:	8	Acq. Method Set:	Gelsemine
Injection #:	1	Processing Method:	sample
Injection Volume:	10.00 ul	Channel Name:	252.0
Run Time:	30.0 Minutes	Proc. Chnl. Descr.:	PDA 252.0

### Auto-Scaled Chromatogram



### Peak Results

Name	RT	Area	% Area	USP Plate Count	USP Resolution
1	12.319	11099885	98.86		
2	20.923	25798	0.23		
3	24.071	16655	0.15		
4	26.852	85807	0.76		